

GENERAL DESCRIPTION

- Widely used for outdoor commercial security lighting
- Replaces 50-100 MH or HID Security Light Fixtures
- Polycarbonate optical lens with UV stabilizer
- Light weight and install-friendly for US standard
- Optional photocell and customizable 347VAC
- Built-in class 2 driver, UL, cUL and DLC qualified

Technical Data

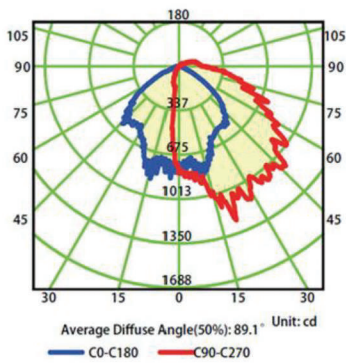
CRI	>80
Beam Angle	120°
Operation Temp.	- 30°C ~ 60°C
Lifespan	50,000 Hours
Waterproof Rating	Wet Location
Lumen per watt	<100 lm/w

ORDERING INFORMATION

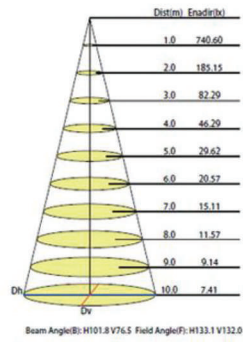
Model #	CCT	Voltage	Wattage	Lumen
AL-LEDWM17W40K	4000K	110-277VAC	17W	1600lm
AL-LEDWM17W50K	5000K	110-277VAC	17W	1600lm
AL-LEDWM25W40K	4000K	110-277VAC	25W	2200lm
AL-LEDWM25W50K	5000K	110-277VAC	25W	2200lm

PHOTOMETRIC

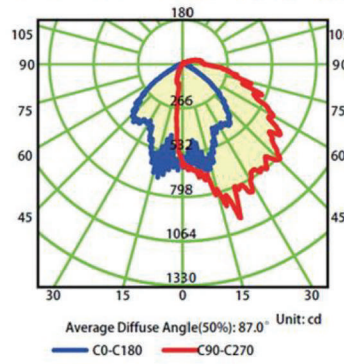
Luminous Intensity Distribution Curve



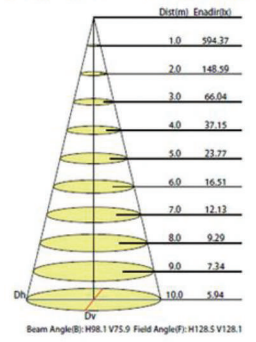
Illuminance at a Distance



Luminous Intensity Distribution Curve

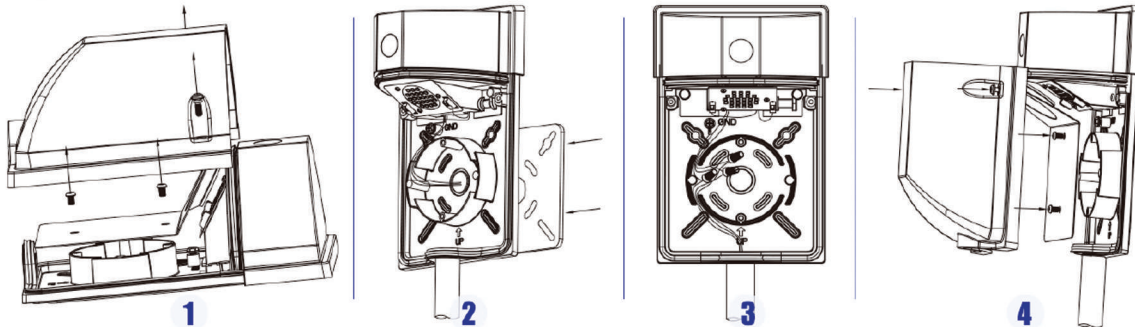


Illuminance at a Distance

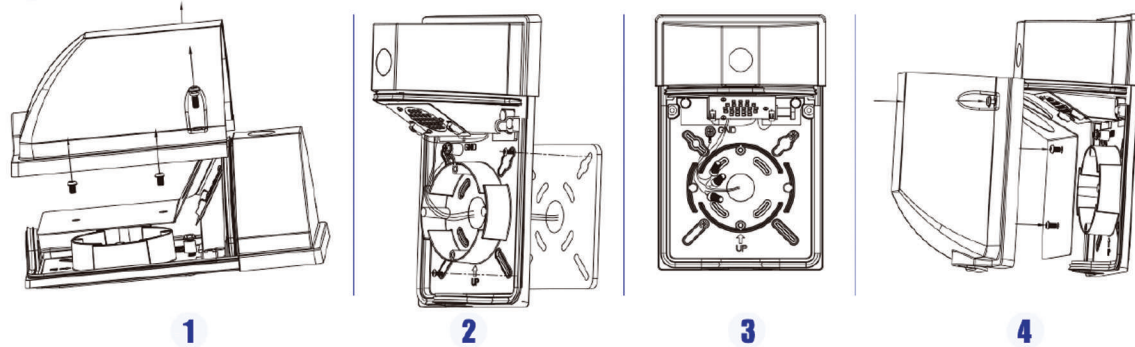


INSTALLATION

● Mounting with a 1/2" conduit at the bottom



● Mounting with J-box



LIGHTING UP THE WORLD
WITH ONE BULB AT A TIME!