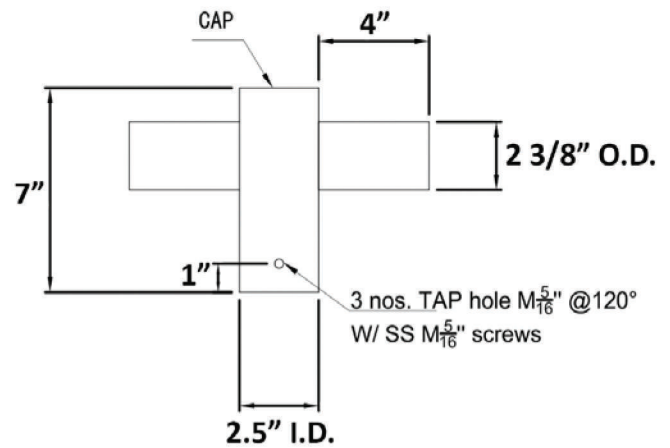


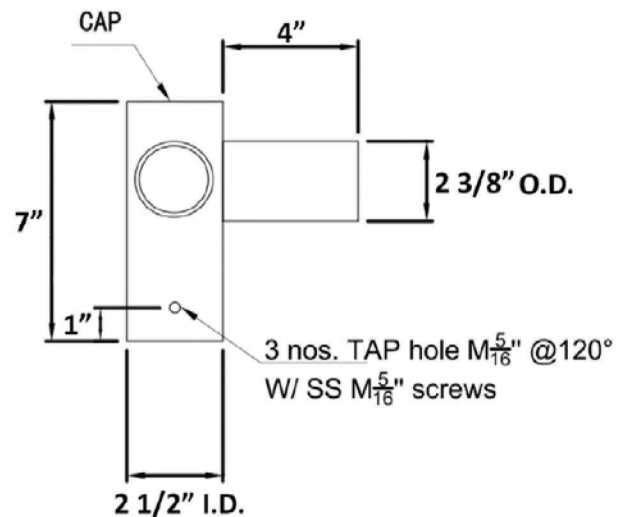
Bottom I.D.	Arm length	Tenon O.D.	Height	Material	Finishing Color	Weight
2.5 in	4 in	2-3/8 in	7 in	Die Cast Aluminum	Dark Bronze	7 lbs



Double 180 Degree



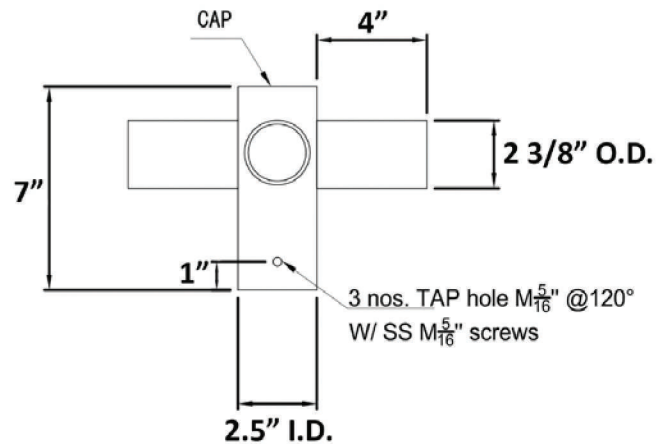
Double 90 degree



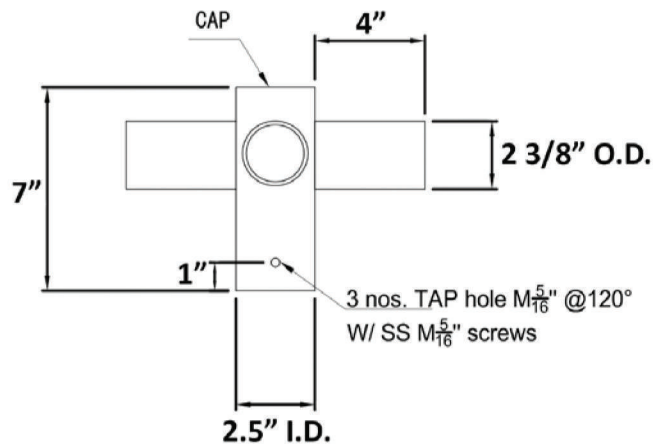
Bottom I.D.	Arm length	Tenon O.D.	Height	Material	Finishing Color	Weight
2.5 in	4 in	2-3/8 in	7 in	Die Cast Aluminum	Dark Bronze	7 lbs



Triple 90 Degree



Triple 120 Degree



Bottom I.D	Arm length	Tenon O.D	Height	Material	Finishing Color	Weight
2.5 in	4 in	2-3/8 in	7 in	Die Cast Aluminum	Dark Bronze	7 lbs



Quad 90 Degree

